



SPARE PARTS

**LX 85
Front End Loader**

SPARE PARTS MANUAL

Summit LX85 Front End Loader

**Summit Tractors LLC
3379 Peachtree Road NE Suite 555
Atlanta GA 30326**

Publication No.:
Revision: 00, Released: DEC-21

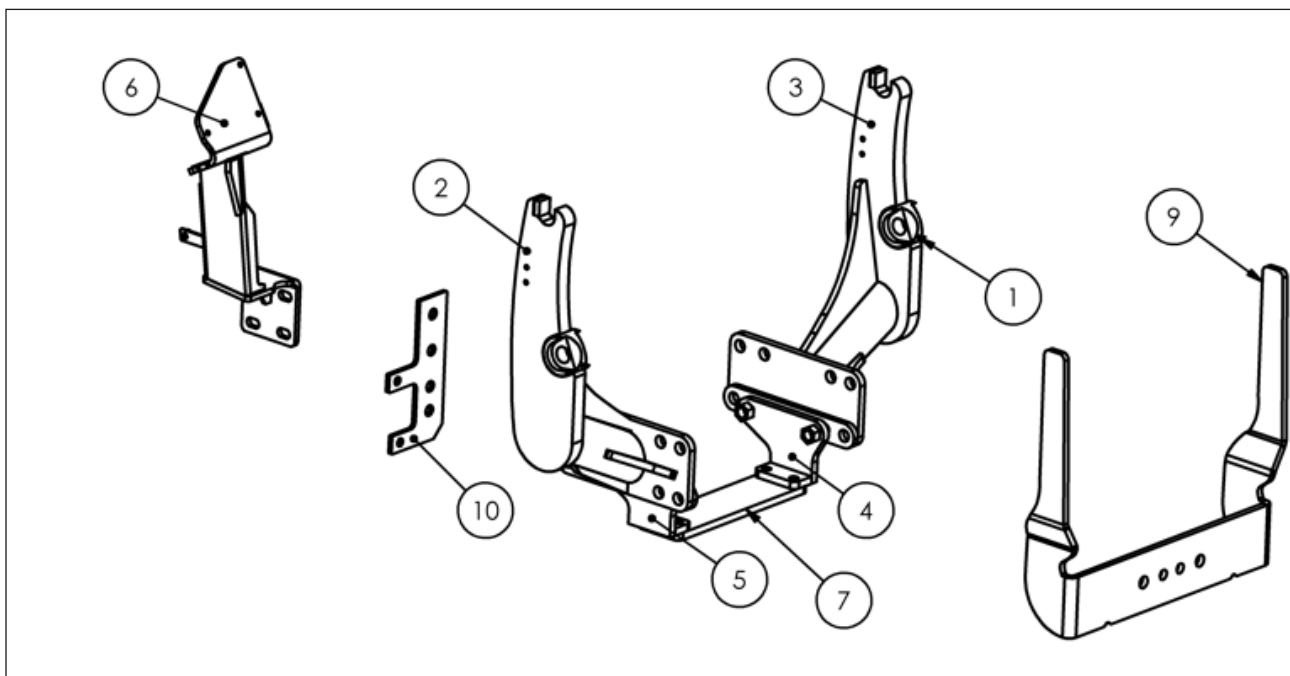


CONTENTS

- 1. Subframe Hardware Detail..... 1
- 2. Hydraulic Fitting Instructions..... 3
- 3. Spare Part Detail..... 5

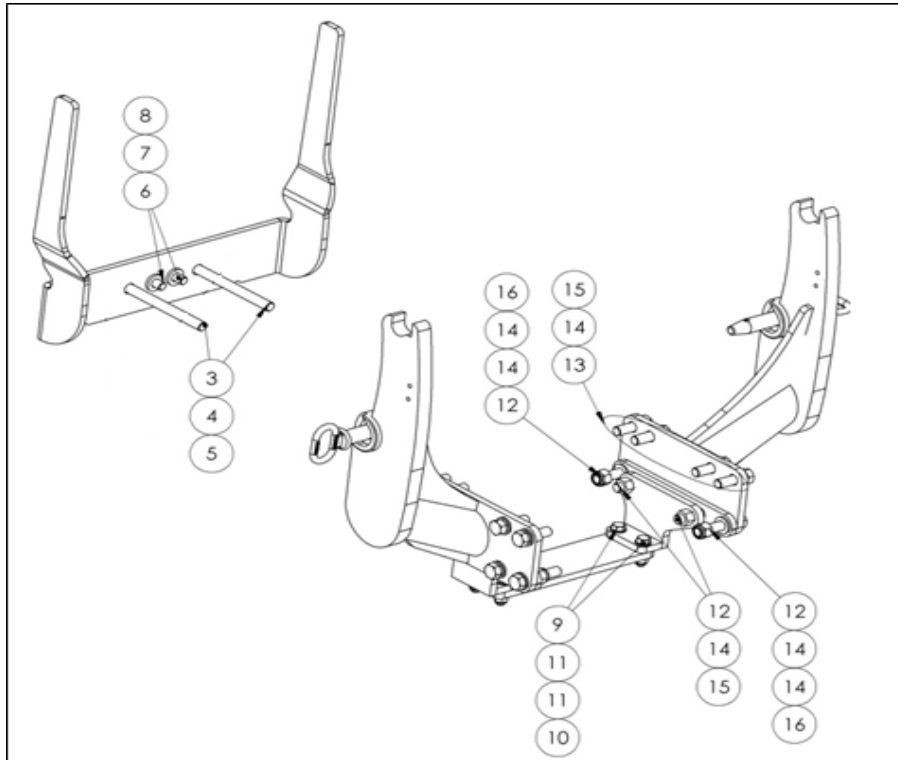
SUBFRAME AND HYDRAULIC FITTING INSTRUCTION

- Subframe and hardware parts details



ITEM NO.	PART NUMBER	DESCRIPTION	QTY.
1	S1130600542	GREASE NIPPLE	2
2	S1130602689	RH SUBFRAME (Harvest Green)	1
3	S1130602690	LH SUBFRAME (Harvest Green)	1
4	S1130602691	LH CROSS MEMBER MTG (Harvest Green)	1
5	S1130602692	RH CROSS MEMBER MTG (Harvest Green)	1
6	S1130602226	DCV MOUNTING BRACKET (Glossy Black)	1
7	S1130602687	CROSS MEMBER (Harvest Green)	1
8	S1130602688	MID MOVER PLT (Harvest Green)	2
9	S1130600540	RAMSHORN (Harvest Green)	1
10	S1130602228	PLATE FOR DCV PIPES MTG (Glossy Black)	1

SUBFRAME AND HYDRAULIC FITTING INSTRUCTION



HORN PLATE CONNECTION			
S.NO	PART NO	DESCRIPTION	QTY
3	S1130602283	HEX,BOLT,M16X2X180 SEMI THREAD	2
4	S1130600547	PLAIN WASHER M16	2
5	S1130600548	SPRING WAHSER M16	2
6	S1130602284	HEX,BOLT,M14X2X40 SEMI THREAD	2
7	S1130600550	PLAIN WASHER M14	2
8	S1130600551	SPRING WAHSER M14	2
X-MEMBER CONNECTION			
S.NO	PART NO	DESCRIPTION	QTY
9	S1130602678	HEX,BOLT,M12X1.75X45 SEMI THREAD	4
10	S1130600563	NYLOC NUT M12	4
11	S1130600559	PLAIN WASHER M12	8
MAIN PLATE			
S.NO	PART NO	DESCRIPTION	QTY
12	S1130600735	HEX,BOLT,M16X2X75 SEMI THREAD,	8
13	S1130602693	HEX,BOLT,M16X2X50 SEMI THREAD	8
14	S1130600547	PLAIN WASHER M16	20
15	S1130600548	SPRING WAHSER M16	12
16	S1130600733	NYLOC NUT M16X2	4

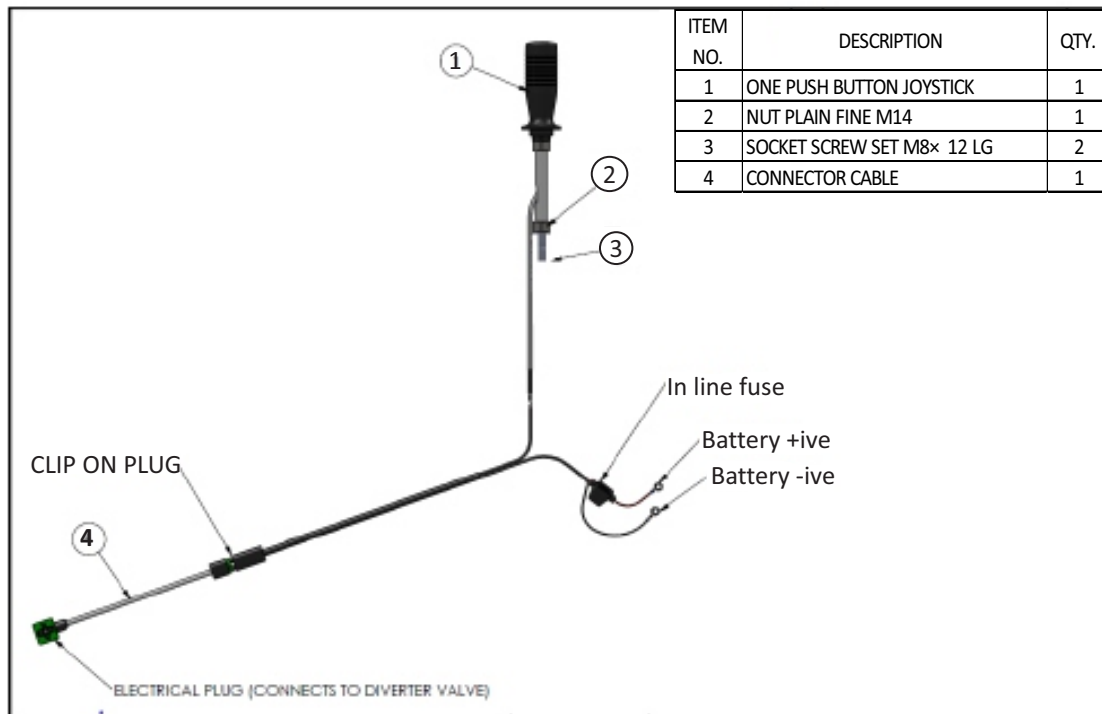
HYDRAULIC FITTING INSTRUCTION

Note:- Refer page no.35 of operator manual

S.NO.	PART NUMBER	DESCRIPTION	QTY.
1	S1130602232	2 DOUBLE ACTING DCV	1
2	S1130602226	DCV MOUNTING BRACKET (Glossy Black)	1
3	S1130602225	PIPE FROM 2DA DCV(HPCO) TO 1DA DCV (P)	1
4	S1130602227	FLEXIBLE PIPE FROM LOADER DCV(T) TO REAR	1
5	S1130602231	TEE ADOPTER- M18x1.5, M18x1.5, M24x1.5	1
6	S1130602230	SECONDARY PIPE PRIORITY VALVE TO 2DA DCV	1
7	S1130602233	PIPE FROM 2DA DCV (B1) TO QRC 2	1
8	S1130602236	PIPE FROM 2DA DCV (A1) TO QRC 1	1
9	S1130602234	PIPE FROM 2DA DCV (A2) TO QRC 3	1
10	S1130602235	PIPE FROM 2DA DCV (B2) TO QRC 4	1
11	S1130602249	HEX BOLT M14X2X50 SA4GS	4
12	S1130602258	SPRING WASHER B-14	4
13	S1130600550	PLAIN WASHER M14	4
14	S1130602257	HEX SCREW M8X1.25X35 8.8 SA4GS	3
15	S1130600687	SPRING WASHER M8	3
16	S1130602252	BANJO BOLT Ø16.4(19TPI)	3
17	S1130602238	ADOPTER M18X1.5-3/8" BSP	4
18	S1130602253	BONDED SEAL FOR3/8" BSP	10
19	S1130602686	PRIMARY PIPE FROM PRIORITY VALVE TO 2DA DCV	1
20	S1130602243	FEMALE QUICK CONNECT COUPLER3/8" BSP	4
21	S1130602255	HEX SCREW M6X30 SA4GS	4
22	S1130602224	HEX NUT M6 -8 SA4GS	4
23	S1130602241	CLAMP-10/10	3
24	S1130602240	CLAMP-12/12	1
25	S1130602228	PLATE FOR DCV PIPES MTG (Glossy Black)	1
26	S1130602222	JOY STICK LEVER	1
26A	S1130602684	(Male M10x1.5 VS MALE M12 X 1.75) Bucher valve to Joystick lever adaptor for push button joystick only	1
27	S1130602229	JOY STICK BELLOW	1
28	S1130602223	JOY STICK KNOB	1
28A	S1130600524	HST IVT PUSH BUTTON KNOB	1
29	S1130602251	HEX SCREW M12*1.75*35	2
30	S1130602260	HEX NUT M12X1.75 -8 SA4GS	2
31	S1130602259	SPRING WASHER B-12 TYPE-A IS:3063-1972	2
32	S1130602244	M/C WASHER DIA 13*DIA 24*2.5	2
33	S1130602245	VIBRATION DAMPER	1
34	S1130602237	CLAMP CURVE	1
35	S1130602683	CUP HOLDER_RH-HST	1

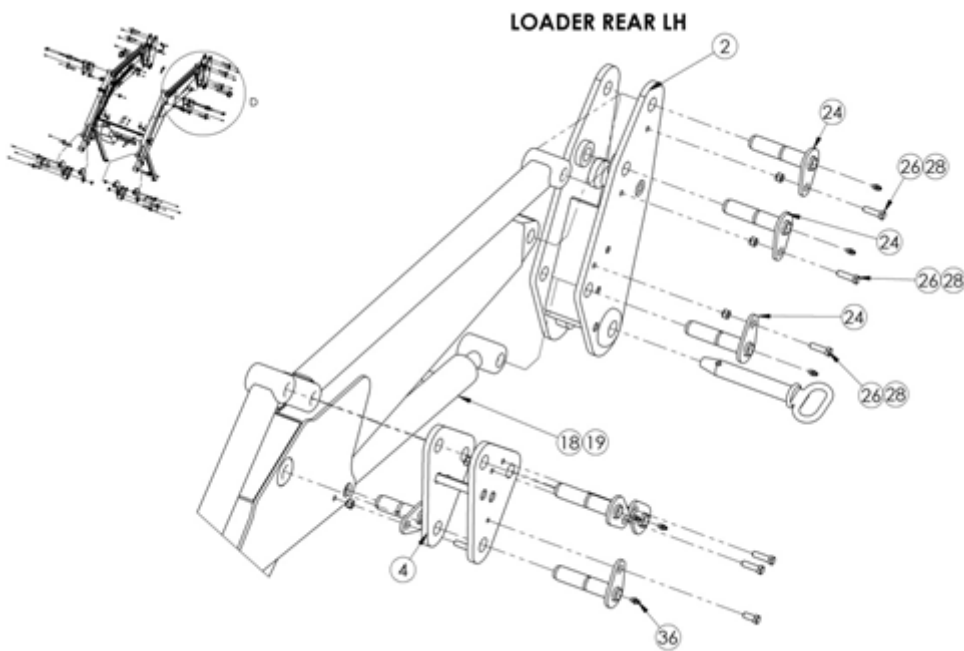
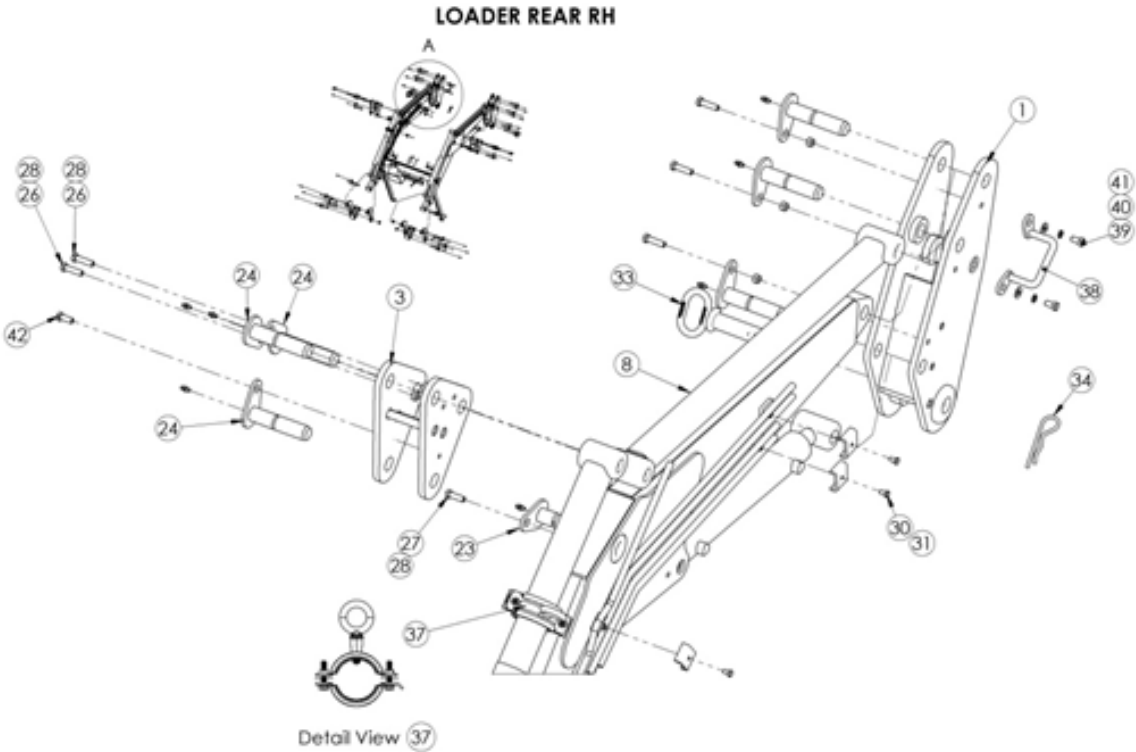
HYDRAULIC FITTING INSTRUCTION

ITEM NO.	PART NO.	DESCRIPTION	QTY
1	S1130602959	WIRE HARNESS CONNECTION TO BATTERY	1



SPARE PARTS ORDER DETAILS

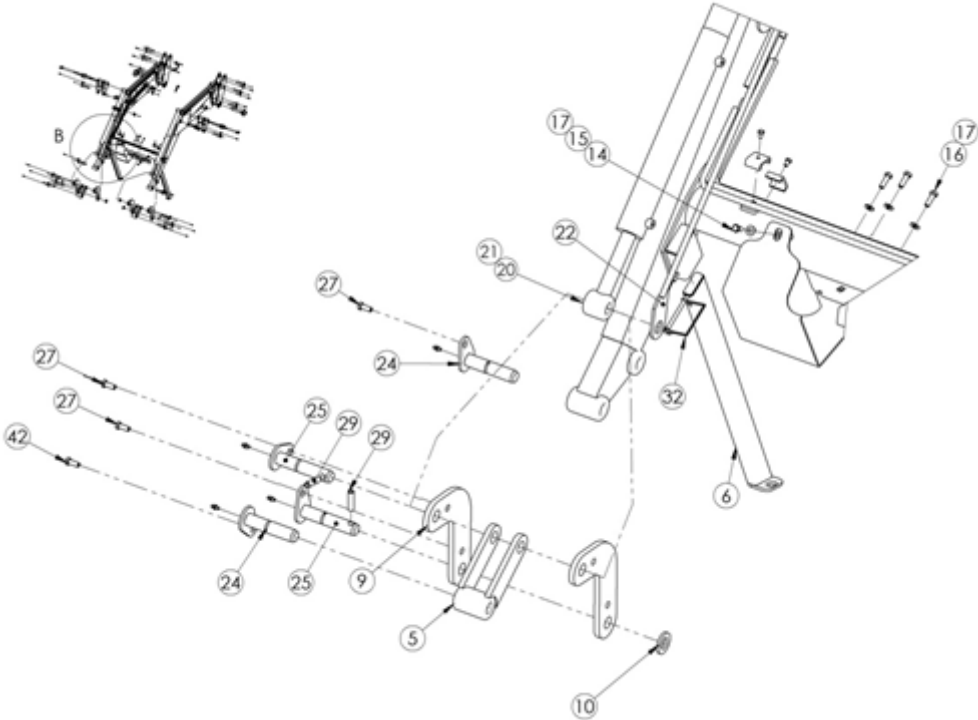
- FEL ASSEMBLY PART DETAILS**



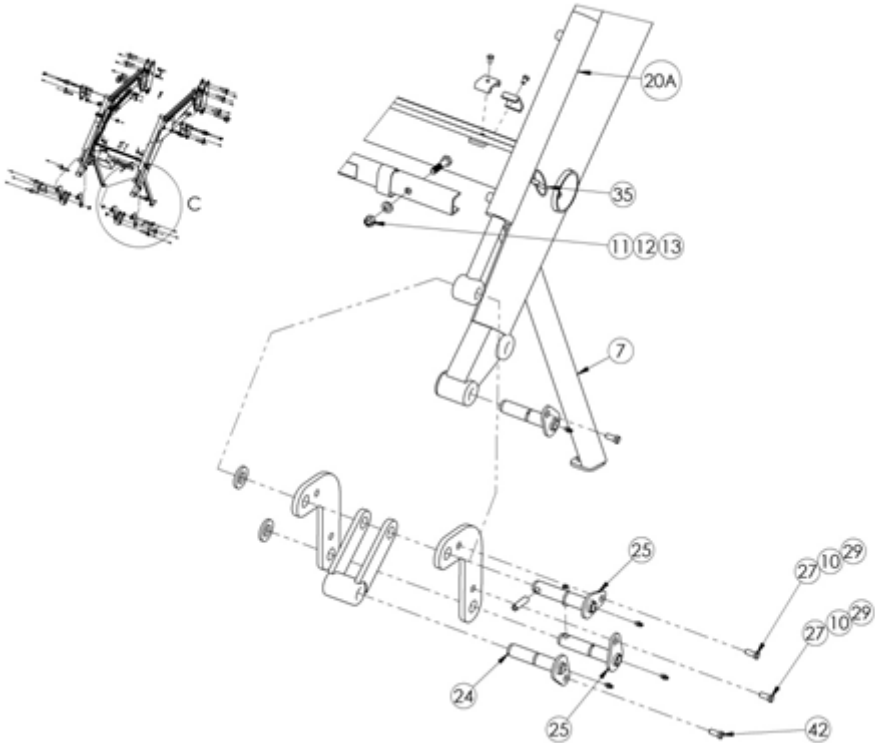
SPARE PARTS ORDER DETAILS

- FEL ASSEMBLY PART DETAILS**

LOADER FRONT RH



LOADER FRONT LH



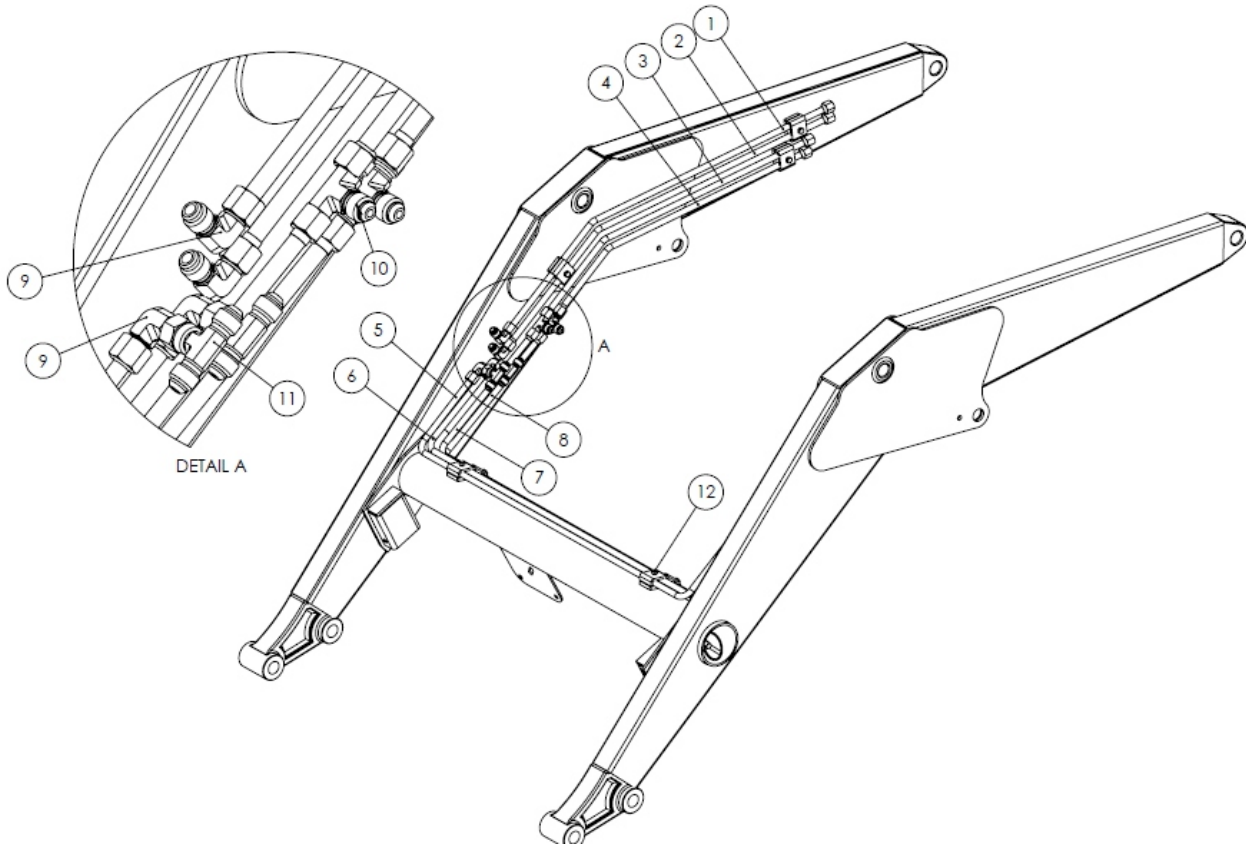
SPARE PARTS ORDER DETAILS

● FEL ASSEMBLY PART DETAILS

ITEM NO.	PART NUMBER	PART DESCRIPTION	QTY.
1	S1130600613	RH POST CAP	1
2	S1130600614	LH POST CAP	1
3	S1130600615	RH MIDDLE ROCKER	1
4	S1130600616	LH MIDDLE ROCKER	1
5	S1130600446	FRONT LINK ASSEMBLY	2
6	S1130600447	LEG ASSEMBLY RH	1
7	S1130600448	LEG ASSEMBLY LH	1
8	S1130600619	RH & LH SL LINK ASSEMBLY 3200	2
9	S1130600449	Front rocker/ Side plate	4
10	S1130600450	SPACER 391	3
11	S1130600451	PROP ASSEMBLY	1
12	S1130600452	NYLOC NUT M10×1.5	1
13	S1130600453	PLAIN WASHER M10	1
14	S1130600621	MANIFOLD COVER	1
15	S1130600464	HEX. BOLT M8×1.25×20 SEMI THREAD	1
16	S1130602674	HEX. FLANGE SHOULDER BOLT M8×1.25×30 SEMI THREAD	3
17	S1130600466	PLAIN WASHER M8	4
18	S1130600454	HYD. LIFT CYLINDER	2
19	S1130601263	LIFT CYLINDER SEAL KIT	2
20	S1130600063	HYD.CYLINDER TILT RH 3200 (Indicator Plate Weld type)	1
20A	S1130600622	HYD.CYLINDER TILT 3200	2
21	S1130601263	TILT CYLINDER SEAL KIT	2
22	S1130600457	LEVEL INDICATOR ASSEMBLY	1
23	S1130600461	GREASABALE PIN ASSEMBLY 287	2
24	S1130600459	GREASABALE PIN ASSEMBLY 284	16
25	S1130600460	GREASABALE PIN ASSEMBLY 297	4
26	S1130602674	HEX. FLANGE SHOULDER BOLT M8×1.25×30 SEMI THREAD	12
27	S1130602676	HEX. FLANGE SHOULDER BOLT M8×1.25×20 SEMI THREAD	6
28	S1130600554	NYLOC NUT M8×1.25	12
29	S1130600006	SPRING DOWEL	4
30	S1130600468	CLAMP COVER	7
31	S1130600469	HEX. BOLT M6×1×10 SEMI THREAD	7
32	S1130600470	SQUARE LOOP PIN	2
33	S1130600471	FORGED PIN	2
34	S1130600472	PIN	2
35	S1130600473	LYNCH PIN	2
36	S1130600474	GREASE NIPPLE GN14	22
37	S1130602945	Level indicator clamp assembly	1
38	S1130602946	Hose Holder Bracket	1
39	S1130602947	HEX. BOLT M8×1.25×15 SEMI THREAD	2
40	S1130600466	PLAIN WASHER M8	2
41	S1130600687	SPRING WASHER M8	2
41	S1130602676	HEX. FLANGE SHOULDER BOLT M8×1.25×15 SEMI THREAD	4

SPARE PARTS ORDER DETAILS

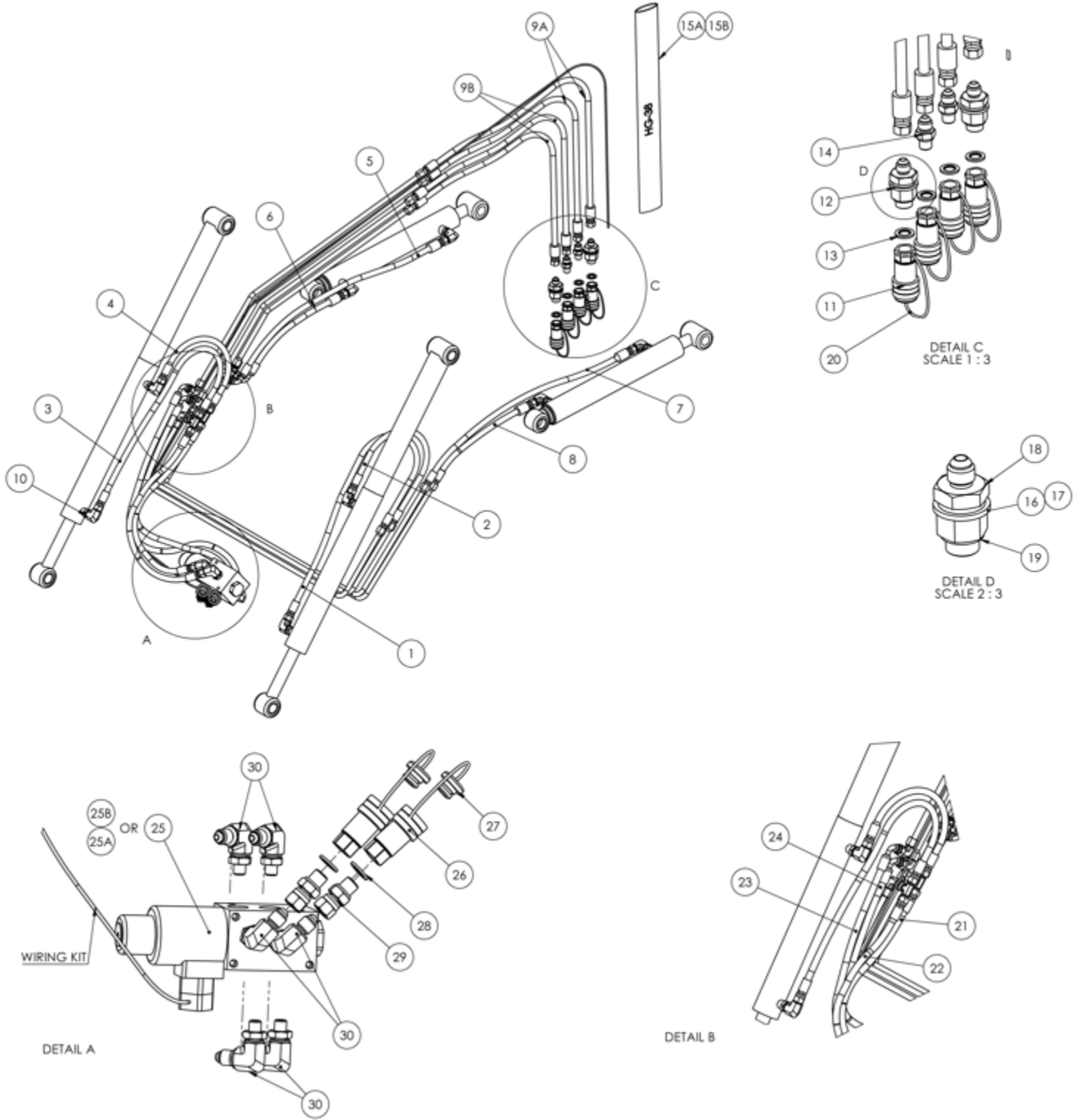
● FEL HYDRAULIC PIPE FITTINGS AND CLAMPS PART DETAILS



ITEM NO.	PART NUMBER	PART DESCRIPTION	STANDARD	3RD FUNCTION
			QTY.	QTY.
1	S1130600496	CROWD PIPE 131	1	0
1	S1130600623	CROWD PIPE 146	0	1
2	S1130600497	DUMP PIPE 132	1	0
2	S1130600626	DUMP PIPE 147	0	1
3	S1130600498	LOWER PIPE 133	1	1
4	S1130600499	RAISE PIPE 134	1	1
5	S1130600500	CROWD PIPE 127	1	1
6	S1130600501	DUMP PIPE 128	1	1
7	S1130600502	LOWER PIPE 129	1	1
8	S1130600503	RAISE PIPE 130	1	1
9	S1130600008	0909 JICM JICM ELBOW	0	4
10	S1130600487	9/16" JICM 9/16" JICM 9/16" JICM TEE	4	2
11	S1130602948	090909 JICM JICM JIC FEMALE TEE	0	2
12	S1130600468	CLAMP COVER	11	11

SPARE PARTS ORDER DETAILS

● FEL HYDRAULIC HOSE AND ADAPTORS PART DETAILS



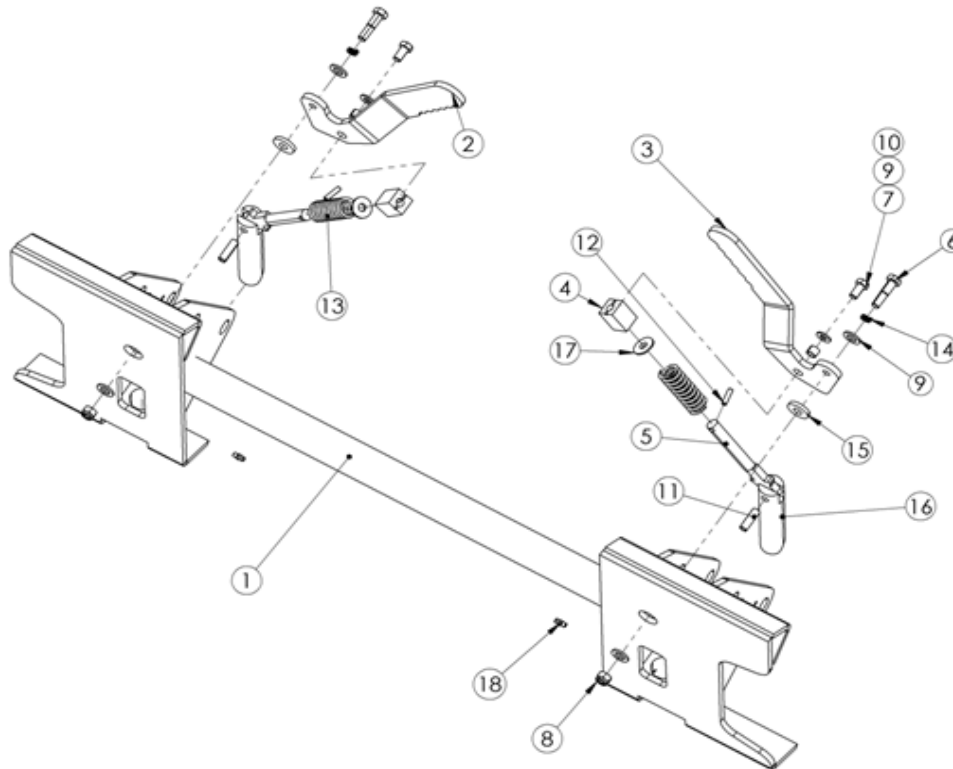
SPARE PARTS ORDER DETAILS

● FEL HYDRAULIC HOSE AND ADAPTORS PART DETAILS

ITEM NO.	PART NUMBER	PART DESCRIPTION	STANDARD	3RD FUNCTION
			QTY.	QTY.
1	S1130600475	HOSE H225-700MM CUT LENGTH	1	1
2	S1130600476	HOSE H226-400MM CUT LENGTH	1	1
3	S1130600477	HOSE H227-700MM CUT LENGTH	1	1
3	S1130602949	HOSE T227-700MM CUT LENGTH	0	1
4	S1130600478	HOSE H228-400MM CUT LENGTH	1	1
4	S1130602950	HOSE T228-400MM CUT LENGTH	0	1
5	S1130600479	HOSE H229-620MM CUT LENGTH	1	1
6	S1130600480	HOSE H230-300MM CUT LENGTH	1	1
7	S1130600481	HOSE H231-620MM CUT LENGTH	1	1
8	S1130600482	HOSE H232-300MM CUT LENGTH	1	1
9a	S1130602695	HOSE H233A-1150MM CUT LENGTH	2	2
9b	S1130602696	HOSE H233B-1200MM CUT LENGTH	2	2
10	S1130600484	9/16" JIC M 1/4" BSPPOM NW 90° ELBOW	8	8
11	S1130600489	3/8" BSPPF FEMALE QRC /POPPET	4	4
12	S1130600113	ORIFICE ADAPTOR ASSY	2	2
13	S1130600492	06 DOWTY SEAL	4	4
14	S1130600485	3/8" BSPPOM 9/16"JICM NIPPLE	4	4
15a	S1130602697	WOVEN NYLON HOSE GUARD -1150mm Lg	2	2
15b	S1130602698	WOVEN NYLON HOSE GUARD -1200mm Lg	2	2
16	S1130600493	08 DOWTY SEAL	2	2
17	S1130600494	ORIFICE PLATE 1.2MM HOLE DRILL	2	2
18	S1130600486	1/2" MALE BSPP 9/16" MALE JIC	2	2
19	S1130600488	3/8" MALE BSPP 1/2" FEMALE BSPP	2	2
20	S1130600490	RUBBER DUST PLUG	4	4
21	S1130602951	HOSE T234-370MM CUT LENGTH	0	1
22	S1130602952	HOSE T235-390MM CUT LENGTH	0	1
23	S1130602953	HOSE T236-655MM CUT LENGTH	0	1
24	S1130602954	HOSE T237-580MM CUT LENGTH	0	2
25	S1130600646	DIVERTER VALVE - DFE 80	0	2
25A	S1130602959	DIVERTER VALVE - Hydro kit	0	1
25B	S1130602961	0409 BSPPOM JICM NIPPLE	0	3
26	S1130600489	3/8" BSPPF FEMALE QRC/POPPET	0	2
27	S1130600490	RUBBER DUST PLUG	0	2
28	S1130600492	06 DOWTY SEAL	0	2
29	S1130600647	3/8"BSPPOM & 9/16 " JIC FEMALE ADAPTER	0	2
30	S1130600010	3/8" BSPPOM 9/16"JICM 90° ELBOW	0	6

SPARE PARTS ORDER DETAILS

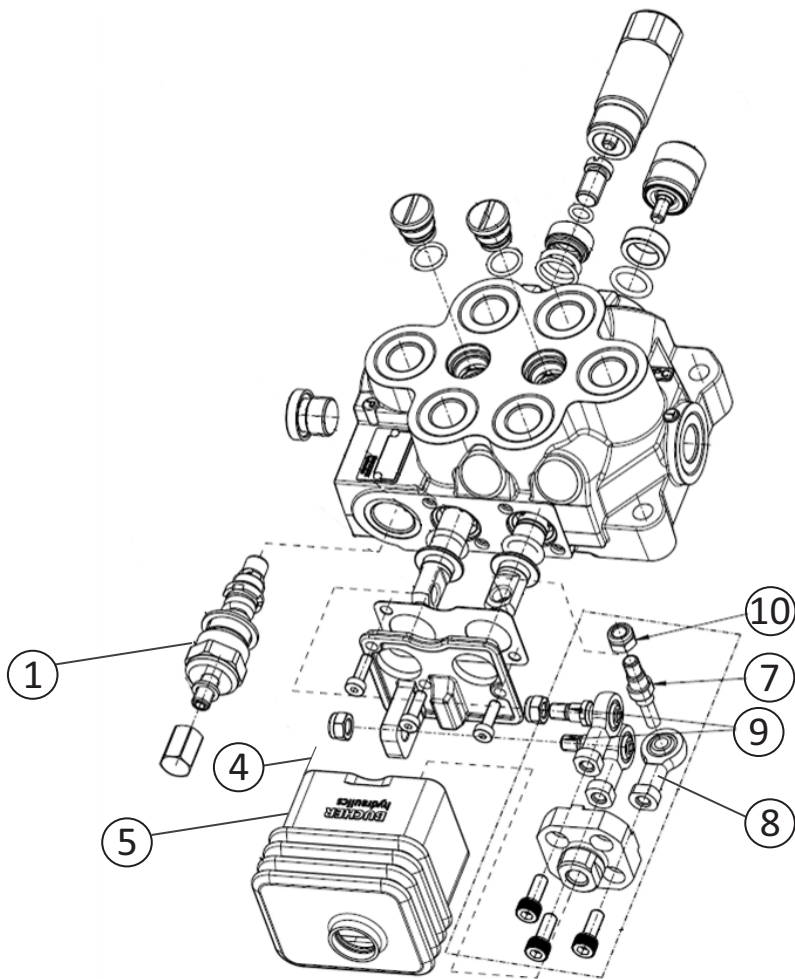
- Skid Steer Hitch Details



ITEM NO.	PART NO.	DESCRIPTION	QTY
1	S1130600504	SKID STEER	1
2	S1130600505	HANDLE RH	1
3	S1130600506	HANDLE LH	1
4	S1130600507	PIVOT BLOCK	2
5	S1130600508	CONNECTIG ROD	2
6	S1130600509	HEX. BOLT M10×1.5×45	2
7	S1130600510	HEX. BOLT M10×1.5×20	2
8	S1130600452	NYLOC NUT M10×1.5	2
9	S1130600453	PLAIN WASHER M10	6
10	S1130600513	PIPE WASHER H11	2
11	S1130600514	DOWEL Ø10×32	2
12	S1130600515	DOWEL Ø6×25	2
13	S1130600516	SPRING	2
14	S1130600517	DOUBLE HELICAL WASHER M12	2
15	S1130600518	FRICTION PAD	2
16	S1130600519	WEDGE PIN	2
17	S1130600520	CUP WASHER	2
18	S1130600474	GREASE NIPPLE GN14	2

SPARE PARTS ORDER DETAILS

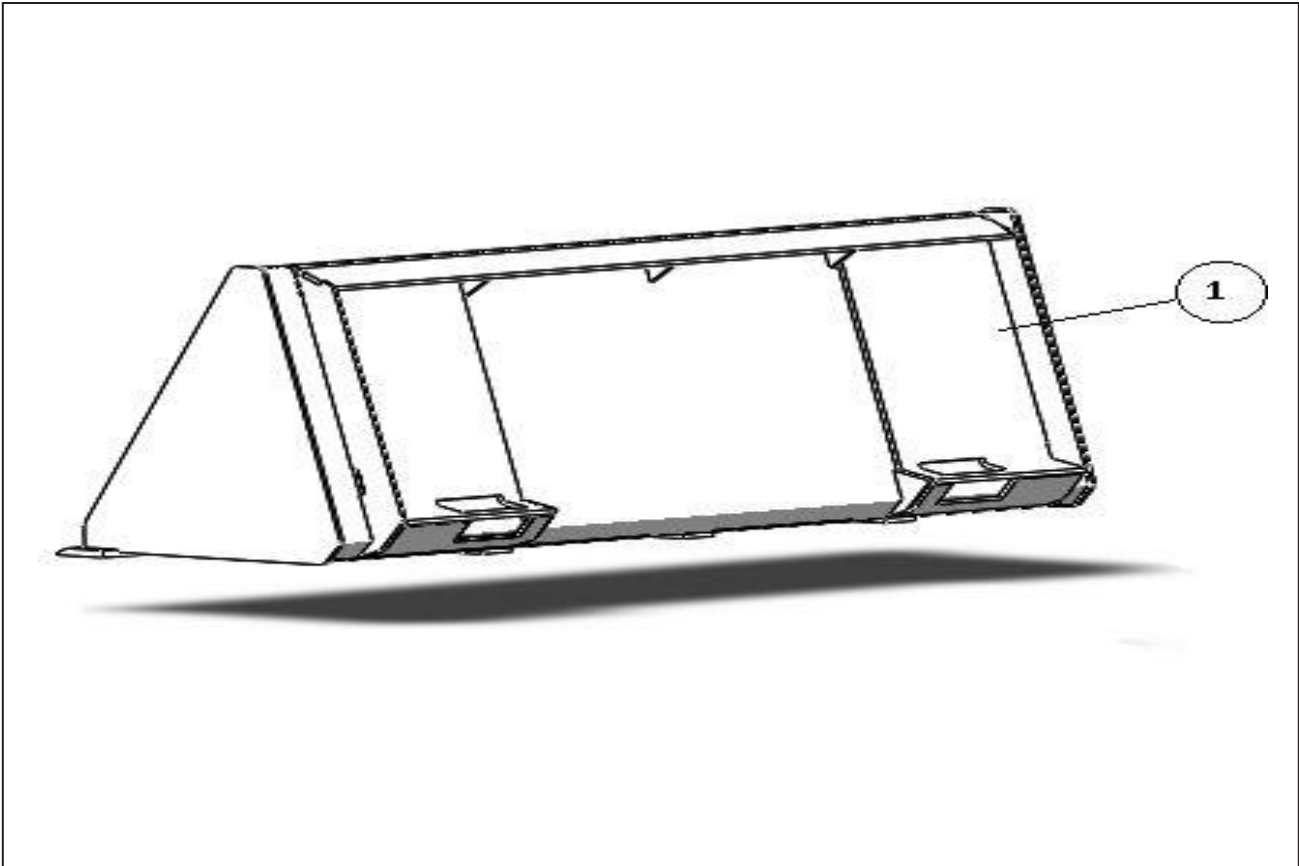
- Valve Internal Parts Details



45 LPM STANDARD VALVE INTERNAL SETUP SPARE New			
Sl No	Part Code	Description	Ref. No
1	S1130600888	VM01 Relief valve	600114200033
4	S1130600890	L247 Joystick assembly HDM11S	600113200645
5	S1130600443	Rubber Boot	600113301135
7	S1130602681	Fulcrum Pin 2nd Spool	600111300270
8	S1130602682	Spherical Bearing	600915300051
9	S1130601308	Fulcrum Pin + Bearing	600113200116
10	S1130603314	HEX NUT M7X1	600905300139

SPARE PARTS ORDER DETAILS

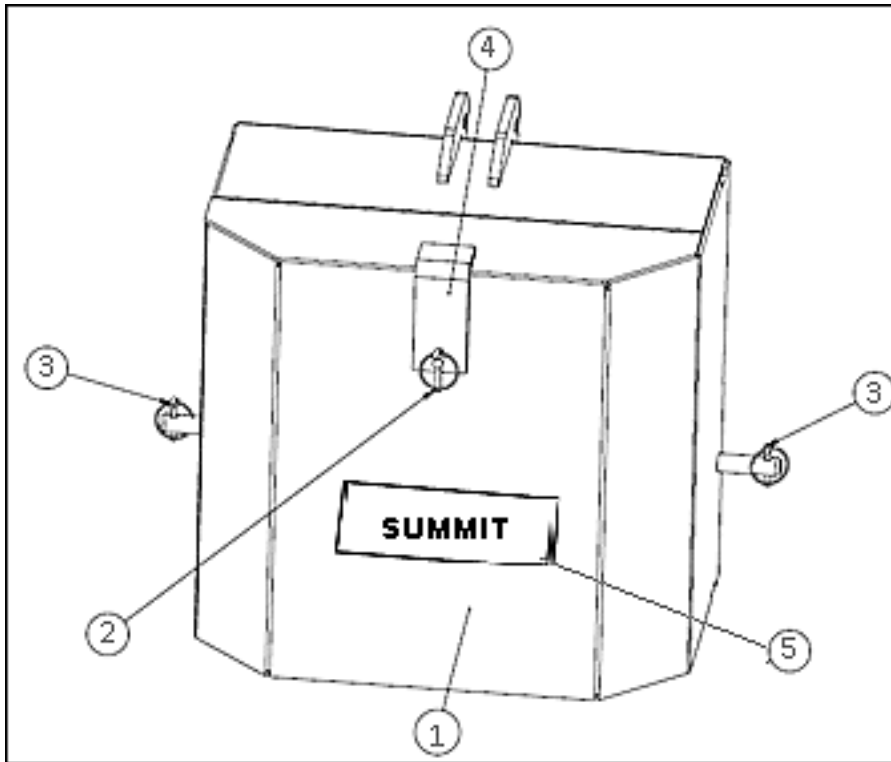
- 50" Skid Steer Standard Bucket



SKID STEER STANDARD BUCKET			
ITEM NO.	PART NO.	PART DESCRIPTION	QTY.
1	S1130600896	50" SKID STEER STANDARD BUCKET	1

SPARE PARTS ORDER DETAILS

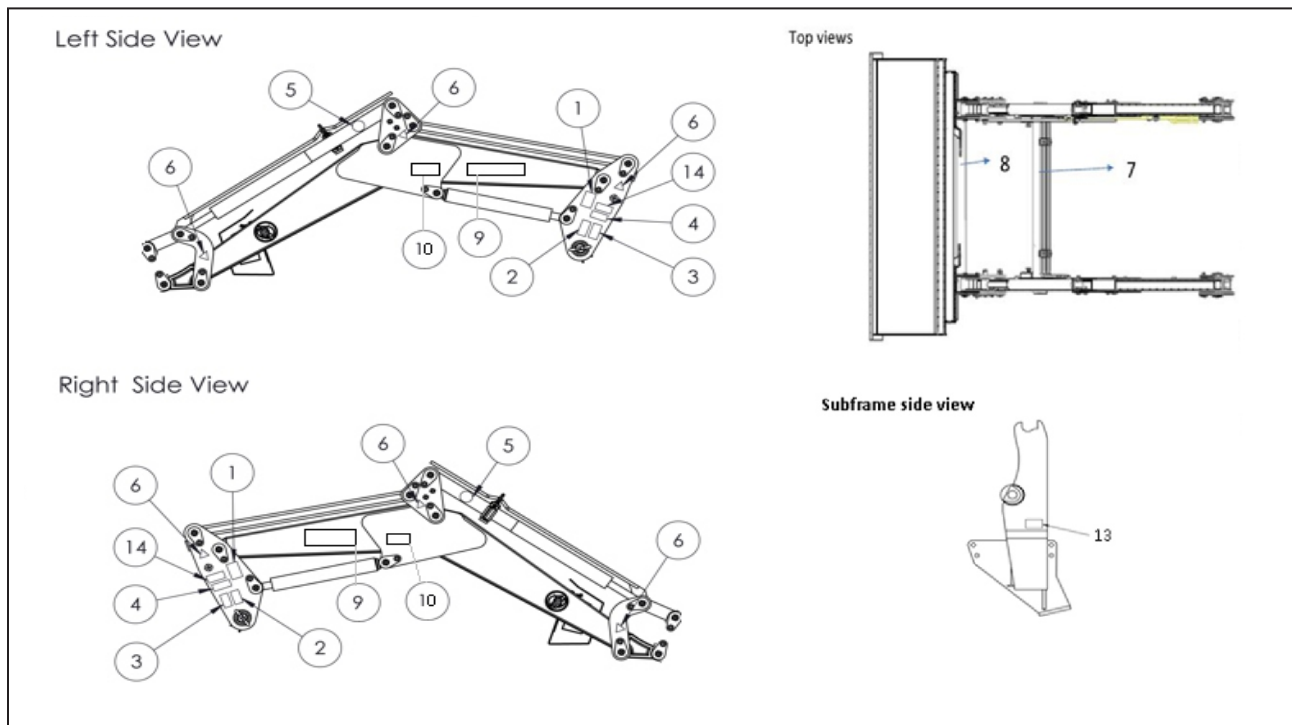
- Counter Weight Box, Cat I 300 Kg.



COUNTERWEIGHT BOX 300 KGS.			
ITEM NO.	PART NUMBER	PART DESCRIPTION	QTY.
1	S1130601325	300 KG COUNTERWEIGHT	1
2	S1130600660	LYNCH PIN LP 03	1
3	S1130601306	LYNCH PIN LP 06	2
4	S1130601307	LOCK PLATE	1
5	S1130602955	SUMMIT STICKER	1

SPARE PARTS ORDER DETAILS

● Loader Decals



Refer to decals details available on Page 12,13 & 14.

ITEM NO.	PART NO.	DESCRIPTION	QTY
1	S1130600575	CRUSHING HAZARD LABEL STICKER	2
2	S1130600576	CARRY PASSENGER LABEL STICKER	2
3	S1130600577	READ THE OPERATOR MANUAL LABEL STICKER	2
4	S1130600578	STAY CLEAR OF RAISED LOADER LABEL STICKER	2
5	S1130600579	LIFTING POINT LABEL STICKER	2
6	S1130600580	PINCH POINT LABEL STICKER	6
7	S1130600581	WARNING STICKER	1
8	S1130600582	WARNING LABEL STICKER	1
9	S1130602955	SUMMIT	2
10	S1130602956	LX85	2
11	S1130600585	LOADER MOVEMENTS DIRECTION STICKER	1
12	S1130600586	LOADER MOVEMENTS WITH THIRD FUNCTION STICKER	1
13	S1130601318	TORQUE WARNING STICKER	2
14	S1130602957	WARNING STICKER CP65	2

item no.- 9



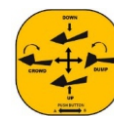
item no.-10



item no.-11



item no.-12



item no.-13



The top-left and bottom-left corners of the page feature a decorative pattern of overlapping, semi-transparent hexagons in shades of light blue and grey. The background is divided into three main sections: a white upper-right triangle, a large light grey lower-left trapezoid, and a dark teal bottom-right triangle.

SUMMIT™
—TRACTORS—